

WEB based Data acquisition and Management software

# THE DATA ACQUISITION AND MANAGEMENT SOFTWARE

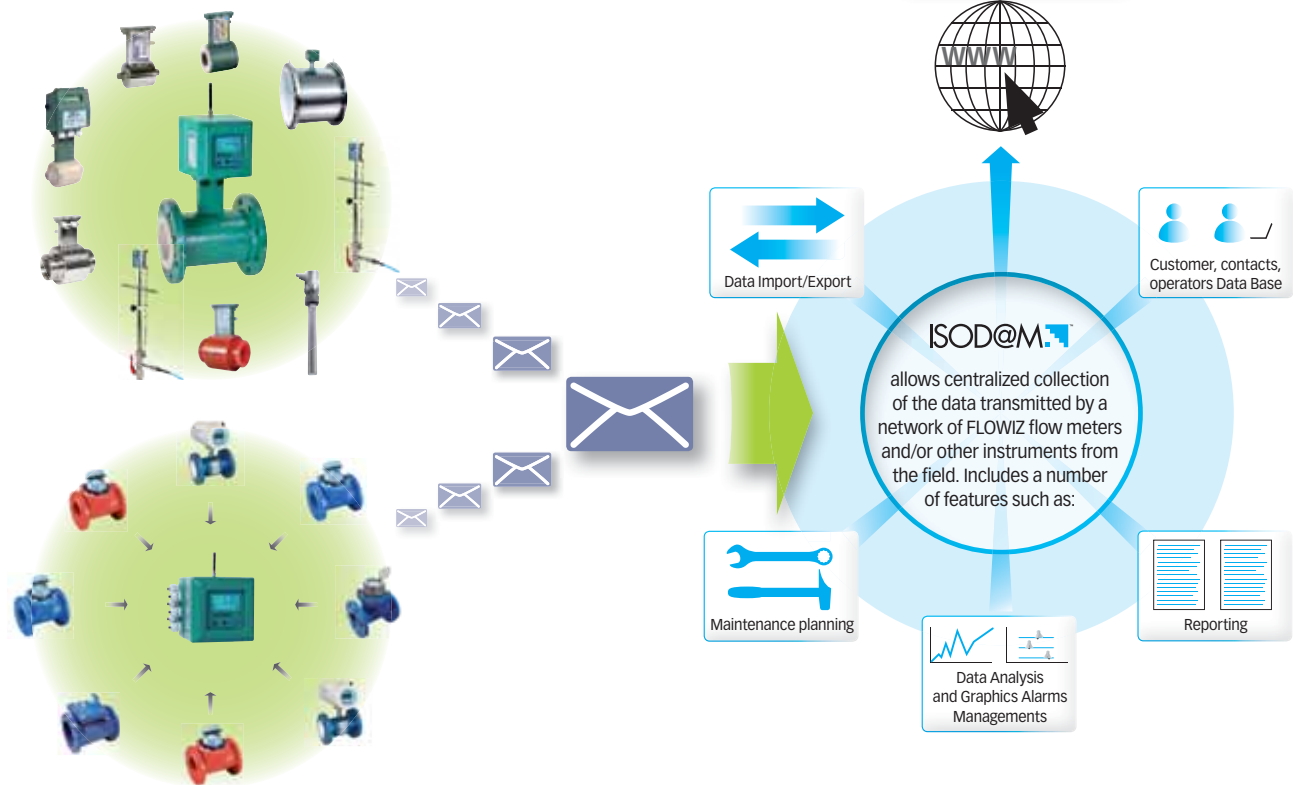
ISOD@M Data Acquisition and Management Software provide an easy solution to monitor your instruments in the field, easy collect, store and analyze all of your data and events.

Easily accessible from the WEB it provide fast connection with your processes, no matter where you are, in your office, travelling or at home.

The data are fully protected through dedicated access requiring a registered account and password; multilevel authority structure allows to assign limited access to each individual operator strictly connected with the function.

## What ISOD@M is

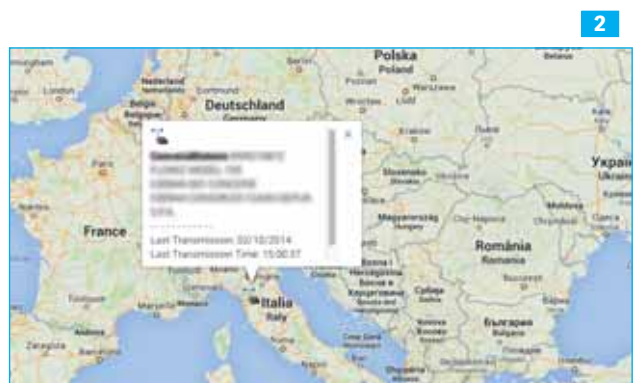
- Data collection and analysis SoftWare
- Based on WEB Platform
- Developed to enhance FLOWIZ (not only)
- Access at User Level
- Graphic and Numeric data display



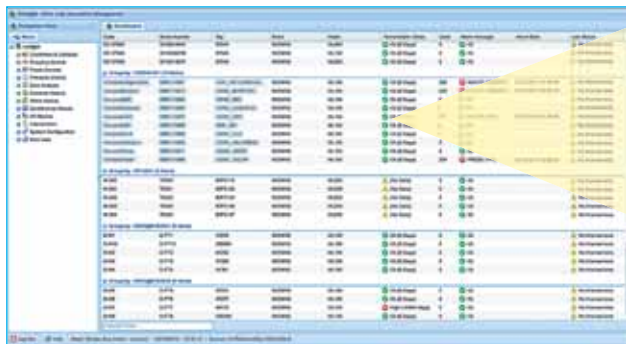
## FEATURES

### Functionalities

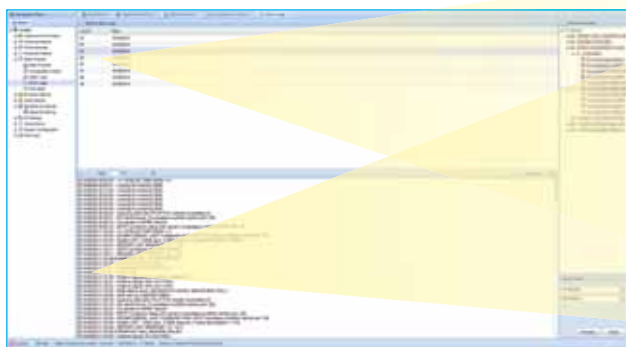
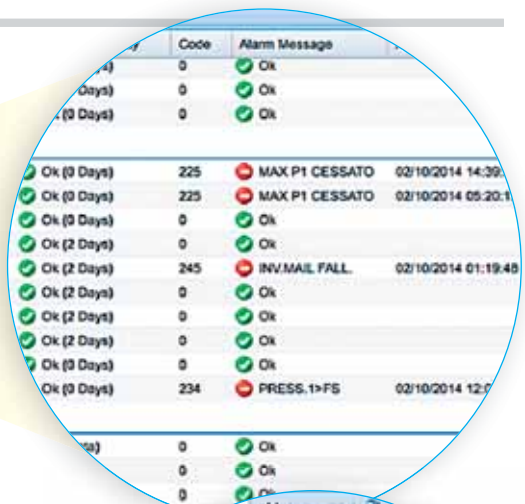
- Access via WEB ⇒ no installation (\*)<sup>1</sup>
- Geolocalization<sup>2</sup>
- Alarms management and history<sup>3</sup>
- Data collection via Mail<sup>4</sup>
- Grafic and numerical data analysis<sup>5</sup>
- Protection of data collected
- Creation of instruments group
- Possibility to define «districts»
- «Water loss» functionality
- Preventive Maintenance
- Data Import/export



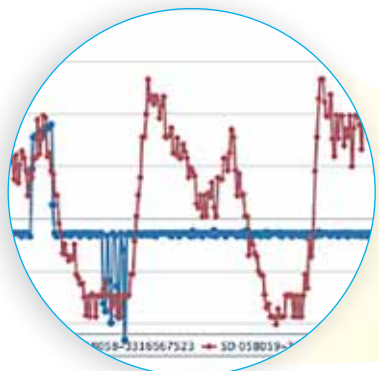
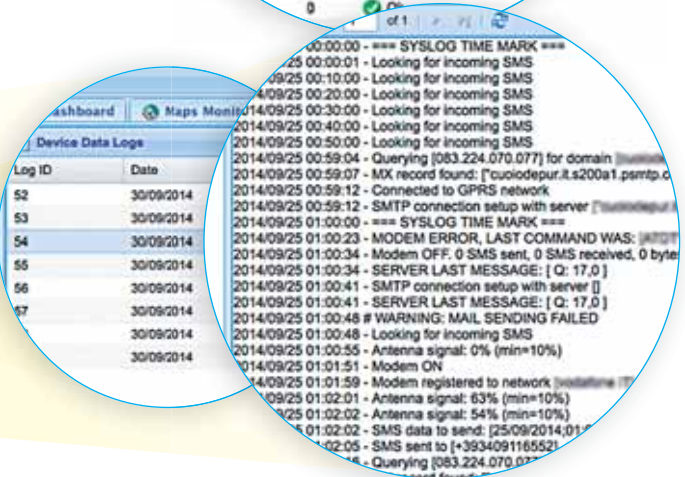
FEATURES



3



4



5



Modular and Multilevel design to meet the requirements of small to large users, with simple but powerful functions or advanced features such as deep data analysis and comparison or maintenance planner amongst others.

All functions can be individually enabled or disabled to create specific authority levels, different for each single manager or operator.

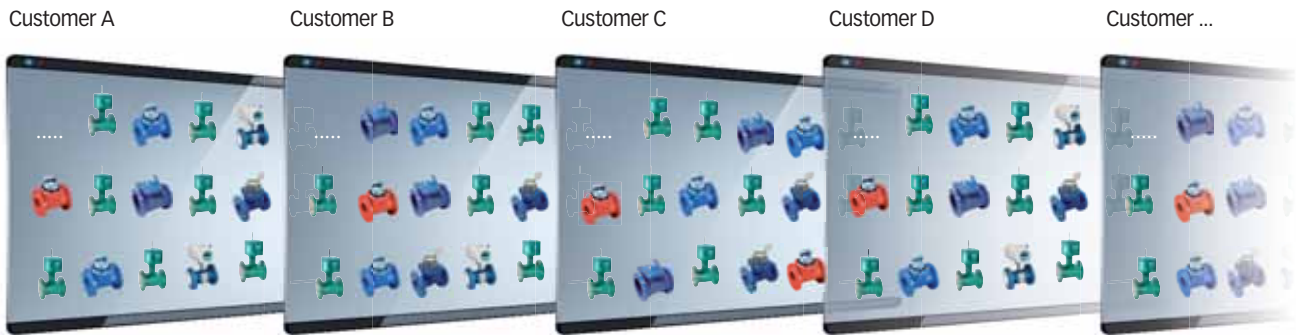
ISOD@M SPECIFICATIONS	
Operating System	Windows
Communication	e-mail or SMS exchange with field
Data Management	Automatic data refresh or manual download when necessary
Data Import / Export	Possibility to upload historical data from existing instruments; possibility to export data in XL spreadsheet or upload to ftp servers
Trending	Multi-level diagrams and data analysis, customizable per timeframe / unit, with zoom-in feature
Internet Access	Chrome, Internet Explorer

ADDITIONAL MODULES
Pipeline and Water Balance
Advanced Data Analysis (Comparative, Flow Rates)
I/O Modules
Intervention and Maintenance Planning
Geo-reference
OPTIONAL SERVICE
Managements/Implementation of data and protocols from instruments not manufactured by Isoil
Data Traffic can be provided upon request, through local or international providers, according to Country



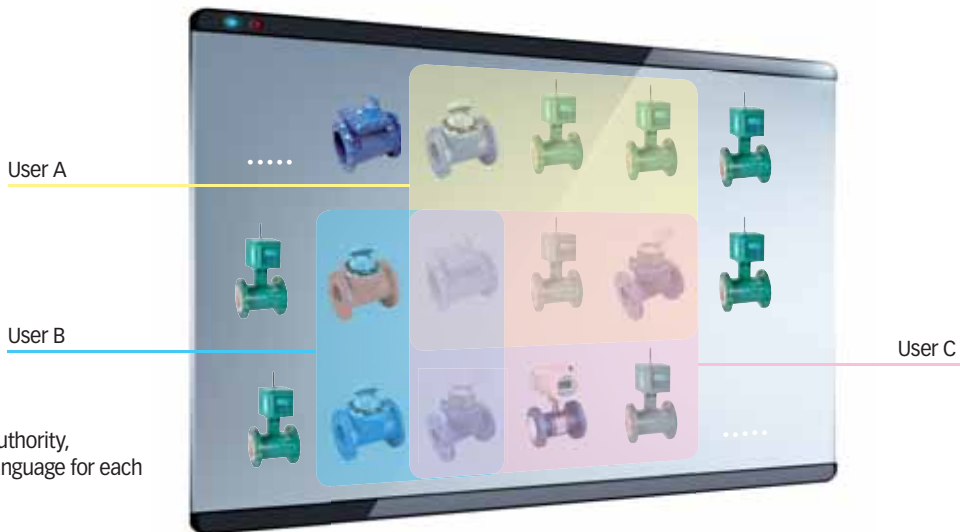
# CONFIGURATIONS

## Multi Users & Multi Levels



## Property of data protected by Customized access and passwords

Customer



Customizable authority, functions and language for each single operator

## Services & Installations

- Two modality of use for the Customer:



Use of Service ("Cloud")



Installation on local (own) server

Capable to received data from a virtually infinite number of instruments, either our own Flowiz family of products or third party equipment.

ISOD@M will receive the readings from the various instruments on the field and will store the data in a database.

The structure of the database can be customized selecting the different engineering units from a list or creating new ones.

The data sequence of the incoming ".csv" files can be create/modified through and easy "drag & drop" function.